



Deaf Sports
New Zealand 



DIBF 3X3 World Cup 2026

AUCKLAND - TĀMAKI MAKĀURAU
NEW ZEALAND - AOTEAROA

15-19 September 2026

Information Package





DIBF 3x3 World Cup 2026

AUCKLAND - TĀMAKI MAKAUARAU
NEW ZEALAND - AOTEAROA



Affiliated Member:

DEAF INTERNATIONAL BASKETBALL FEDERATION (DIBF)
INTERNATIONAL COMMITTEE OF SPORTS FOR THE DEAF (ICSD)

+64221576062 - WhatsApp Messenger
admin@deaf3x3worlds.nz

15 September 2025

INVITATION LETTER

Dear Members of National Deaf Sports Federations,

Deaf Sports New Zealand (DSNZ) is honoured to invite your distinguished federation to participate in the **DIBF 3x3 World Cup 2026** to be held in Auckland, New Zealand, from 15-19 September 2026.

The Organising Committee, under the authority of Deaf Sports New Zealand and with the full support of the Deaf International Basketball Federation (DIBF), will host this major event at Manuka Doctor Arena in Central Auckland.

This will be the first time New Zealand hosts a world-level Deaf basketball tournament. The World Cup is proudly supported by Auckland Council, Basketball New Zealand, and a range of community partners.

Auckland, known as the "City of Sails", offers world-class facilities, stunning natural landscapes, and a vibrant cultural experience. We are committed to delivering a tournament that celebrates excellence in sport, Deaf culture, and community connection.

We know that Auckland will provide an exceptional experience for athletes, officials, and supporters from around the world, and we look forward to welcoming you to Aotearoa New Zealand for this historic event.

We hope you will accept our invitation and join us in September 2026.

Best regards,

Chris Sinclair

President / Organising Committee Lead

Deaf Sports New Zealand

www.deafsports.co.nz

www.deaf3x3worlds.nz



Hosted by
Deaf Sports New Zealand
and partners



GENERAL INFORMATION

Deaf International Basketball Federation (DIBF) and Deaf Sports New Zealand (DSNZ) are proud to announce that the DIBF 3x3 World Cup 2026 will be hosted in Auckland, New Zealand, from 15 to 19 September 2026.

This prestigious event is organised by Deaf Sports New Zealand in collaboration with the Deaf International Basketball Federation.

DIBF and DSNZ warmly welcome all athletes, participants, and families to Aotearoa New Zealand. We invite you to enjoy the hospitality of our beautiful country, and we wish you the very best of luck as you compete at the Championships.

ORGANISING AND TECHNICAL COMMITTEE

Organising Committee President

Chris Sinclair
President - Deaf Sports
New Zealand



DIBF 3x3 Technical Director

Dario Pignataro
DIBF Central Board



DIBF Secretary General

James DeStefano
DIBF Central Board



He mihi nui ki ngā kaitākaro o te ao – nau mai rā ki Tāmaki Makaurau, Aotearoa.

A warm greeting to the athletes of the world – welcome to Auckland, New Zealand.

HOST CITY

Auckland, New Zealand

Auckland is the largest city in New Zealand, located on the North Island between two stunning harbours – the Waitematā to the north and the Manukau to the south. Known as Tāmaki Makaurau in te reo Māori, Auckland is a diverse and vibrant urban centre that blends natural beauty with cultural richness. Built on a volcanic field, the city is surrounded by scenic beaches, lush rainforests, and more than 50 dormant volcanoes. Often referred to as the “City of Sails,” Auckland boasts a strong maritime heritage and is a gateway to both adventure and relaxation.

Climate Data for Auckland

In September, Auckland experiences the beginning of spring. Average low temperatures range between 9–11°C (48–52°F), while average daytime highs reach 16–18°C (61–64°F). Expect a mix of sunshine and showers, with occasional fresh breezes – perfect for exploring the city’s coastal walks and outdoor attractions.



VENUE

Manuka Doctor Arena (formerly ASB Tennis Arena)

Located at 1 Tennis Lane (off Stanley Street) in Parnell, Auckland, this iconic tennis venue has been central to New Zealand's tennis scene since its opening in November 1922. It features 12 GreenSet-hard courts—3 indoor and 9 outdoor—including a floodlit stadium court that hosts the prestigious ASB Classic tournament every January. Our Deaf Basketball tournament will be hosted on this very court.

With seating capacity around 3,000, the arena includes various stands—Redwood, Yock, and a rooftop stand—all offering bucket seating, some covered, others exposed to sun (advising sunscreen and hydration)

Why it stands out:

- A century-old venue blending rich history with modern tennis amenities.
- Hosts international stars (e.g., Nadal, Federer, Osaka, Monfils) each summer.
- Close to the Central Business District
- Next to the stunning Auckland Domain, with beautiful walks, views over the harbour.
- Close to Public Transport



ACCOMODATION

Accommodation Price - INCLUDES

- Bed
- Buffet Breakfast / Lunch / Dinner
- Transport (Airport)
- Transport (Venue)



Room Options	Cost Per Night - USD PER PERSON
1 Room - 1 King Bed 1 Adult Maximum (Couples - Contact OC)	\$225.00
1 Room - 2 Single Beds 2 Adults Maximum	\$145.00
Single Bunk Bed (4 beds 1 room) (4 People Maximum) (5 minute walk from main hotel)	\$100.00



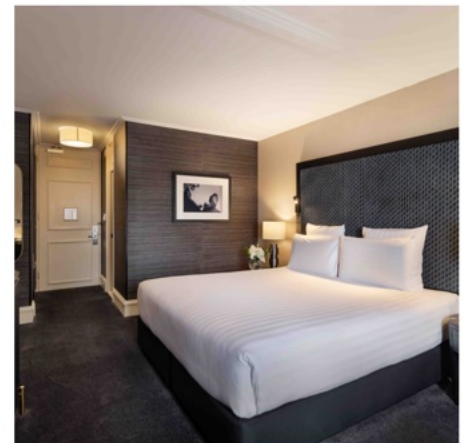
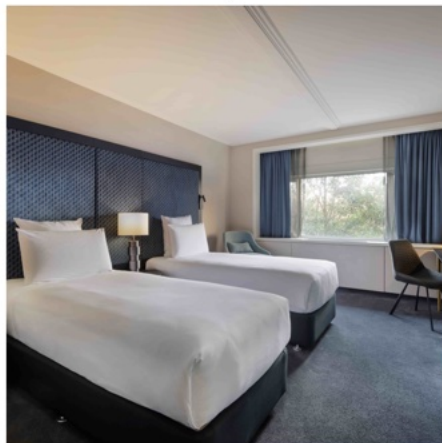
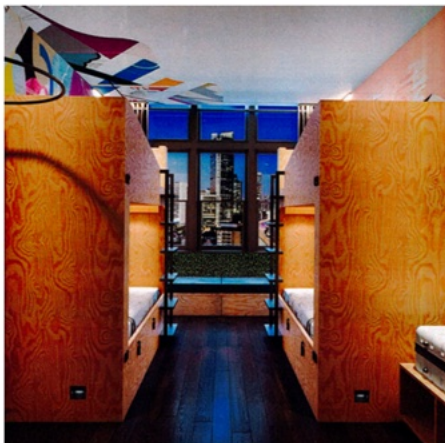
Pool available for use
+ Ice Baths
+ Spa
(Included in Costs)



Bunk Room

Two Single Beds

King Bed



AIRPORT AND TRANSPORTATION

Auckland International Airport

There is only one airport servicing Auckland City. This is Auckland International Airport. Over 60 countries in the world have direct flights into Auckland every week.

Be aware when you book your flights - you will lose 1 or 2 days during your travel duration - make sure you check your arrival and departure dates.

There will be transportation between Airport and Accommodation to meet your flights on arrival. After the tournament - 21st September - there will be transportation to return you to the airport.



Entry into New Zealand

There are requirements for entry into New Zealand.

- Most passengers are required to apply for a "NZeTA" for entry - this is \$17 NZD (approx \$10 USD)
- Most passengers are required to pay a \$100.00 tourism Tax to New Zealand Government (approx \$60 USD)
- Please check Immigration New Zealand for visa Requirements for your country.
<https://www.immigration.govt.nz/visas/new-zealand-electronic-travel-authority-nzeta/>
- If you require support letters or documentation for your visa application - Please contact OC for information

OFFICIAL PROGRAMME

OFFICIAL DATES

- 12TH September 2026 - Check In / Team Arrivals / Training Day
- 13th September 2026 - Training Day
- 14th September 2026 - Morning - Technical Meeting + Training
- 14th September 2026 - Opening Ceremony (more information coming)
- 15th September 2026 - Tournament Matches - Day 1
- 16th September 2026 - Tournament Matches - Day 2
- 17th September 2026 - Tournament Matches - Day 3
- 18th September 2026 - Tournament Marches - Day 4
- 19th September 2026 - Tournament Matches - Day 5
- 19th September 2026 - Medal Ceremony / Closing Ceremony
- 20th September 2026 - Check Out / Team Departures

OFFICIAL BALL

OFFICIAL BALL

Official 3x3 Game Ball

Wilson FIBA 3x3

<https://fiba3x3.com/en/ball.html>



REGISTRATION PROCESS

DIBF REGISTRATION PROCESS

IMPORTANT DEADLINE DATES

Final Team Registration Form 1 - March 14 - 2026

Preliminary Name Registration Form #2 - June 14 - 2026 (6 Players + Official)

Draw Ceremony - June 2026

Final Name Registration Form #3 - 14th September 2026 (Technical Meeting) - (4 Players + Official)

IMPORTANT COSTS

\$ 200 USD - Team Participation Fee 4 Player + 1 Official

\$40 USD - Additional Participation Fee per Official

ACCOMODATION + ORGANISING COMMITTEE FEE PROCESS

Accommodation - Online Form

www.deaf3x3worlds.nz

(Code will be provided to your Federation for Accommodation Form)

Booking Deadline: March 31 - 2026

Payment Deadline

April 14 - 2026

35% Accommodation Costs

June 14 - 2026

40% Accommodation Costs

August 14 - 2026

25% Accommodation Costs

August 31 - 2026

\$75 per participant Organising Committee Fee

COMMUNICATIONS

INTERNET LINKS

Host Website: www.deaf3x3worlds.nz

Website: <https://www.dibf.org/>

Facebook: <https://www.facebook.com/DIBFofficial>

Instagram: <https://www.instagram.com/DIBF3x3>

X: <https://x.com/dibfofficial>

YouTube: <https://www.youtube.com/@dibf3x3official>

Contact

DIBF = secretary_general@dibf.org

World 3x3 Organising Committee = admin@deaf3x3worlds.nz



Want to make the most of travelling to
New Zealand - visit Deaf Adventures
and turn your Basketball trip
into a full trip with exploring our country..

www.deafadventures.co.nz

Visit our website for information

Auckland / New Zealand / Tourism

Venue Information / Schedule / Live Streaming Links

www.deaf3x3worlds.nz